

MATCHING FINE VENEERS

JONATHAN BENSON



AWFS 2017

WHY USE VENEER

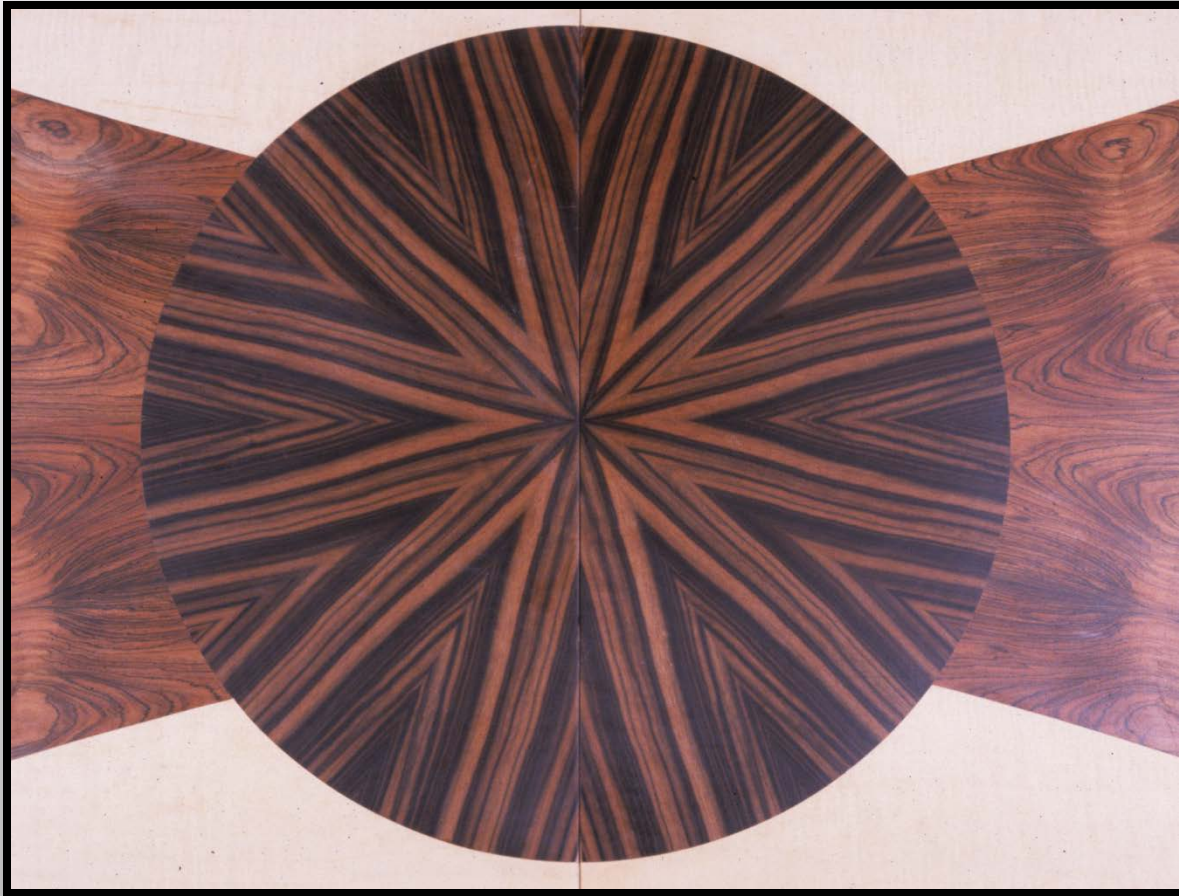
Efficient use of Material



Best Logs Often Go to the Veneer Mill



Veneer is Omni-Directional



Marquetry



Parquetry



HOW VENEER IS CUT

Veneer Slicer



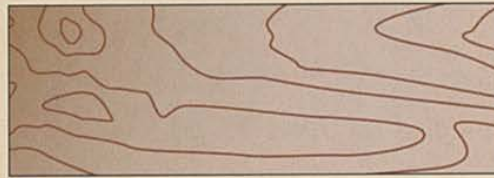
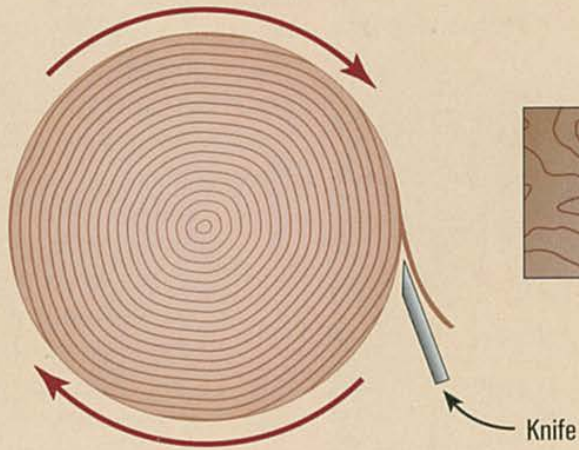
Sliced Flitch-Cut Veneer



Band Sawn Veneer



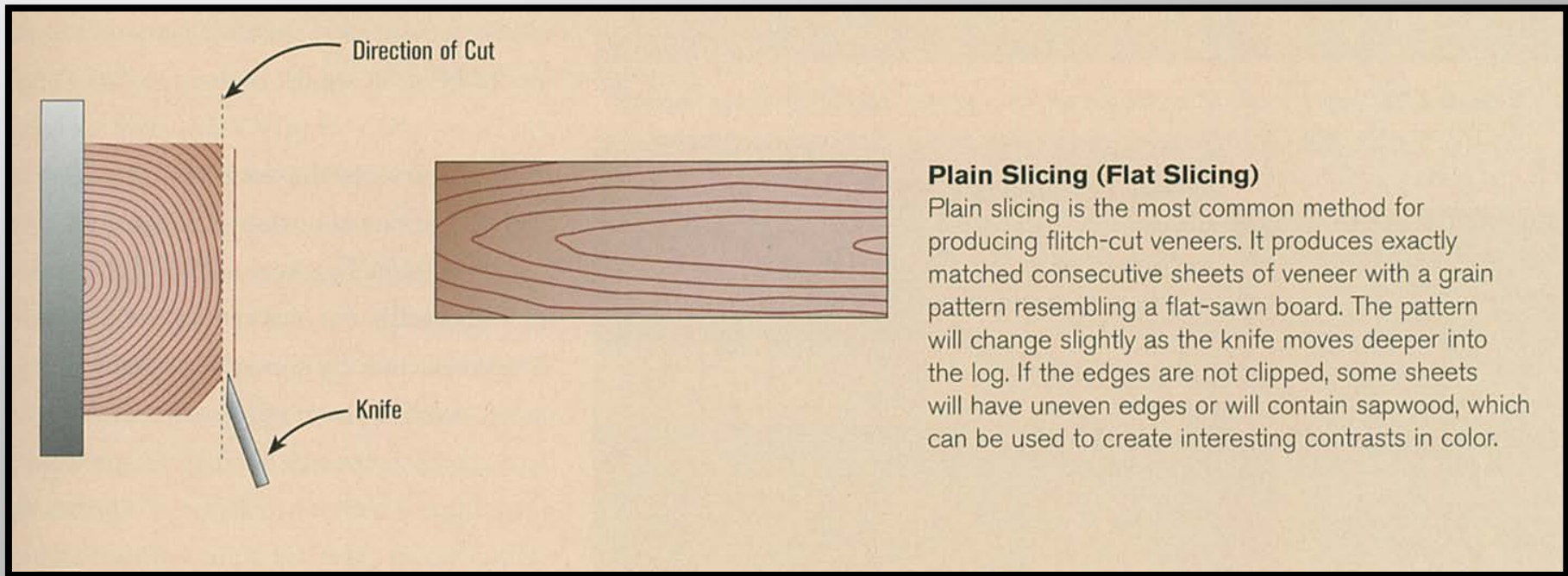
Rotary Cut



Rotary Slicing

Plywood is produced by rotary slicing. The process yields a continuous sheet of veneer with a consistent wavy grain pattern that generally repeats along the length. This method is very efficient and yields large sheets of veneer with a consistent grain pattern, but it does not necessarily create interesting figure and character.

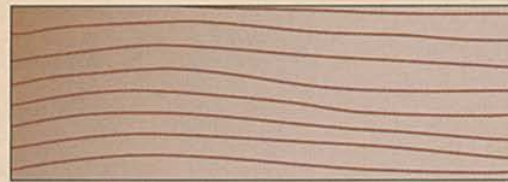
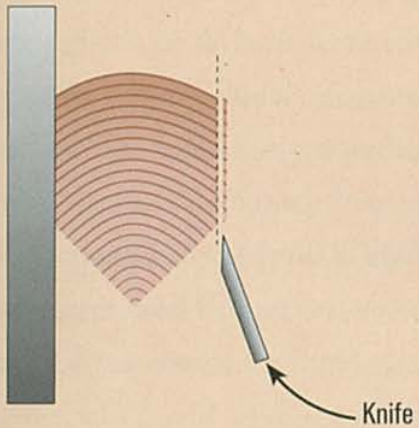
Plain Slicing



Plain Slicing (Flat Slicing)

Plain slicing is the most common method for producing flitch-cut veneers. It produces exactly matched consecutive sheets of veneer with a grain pattern resembling a flat-sawn board. The pattern will change slightly as the knife moves deeper into the log. If the edges are not clipped, some sheets will have uneven edges or will contain sapwood, which can be used to create interesting contrasts in color.

Quarter Slicing



Quarter Slicing

Quarter-slicing will produce exactly matched quarter-sawn sheets with a strong linear pattern. It can also emphasize mottled figure in some woods. The quartered logs also can be rotated 90° to slice the veneer starting from the outside of the trunk, tangential to the curve of the annual rings. This will maximize the yield of quilted figure, which usually appears only near the surface of the log.

Book Matched Veneer

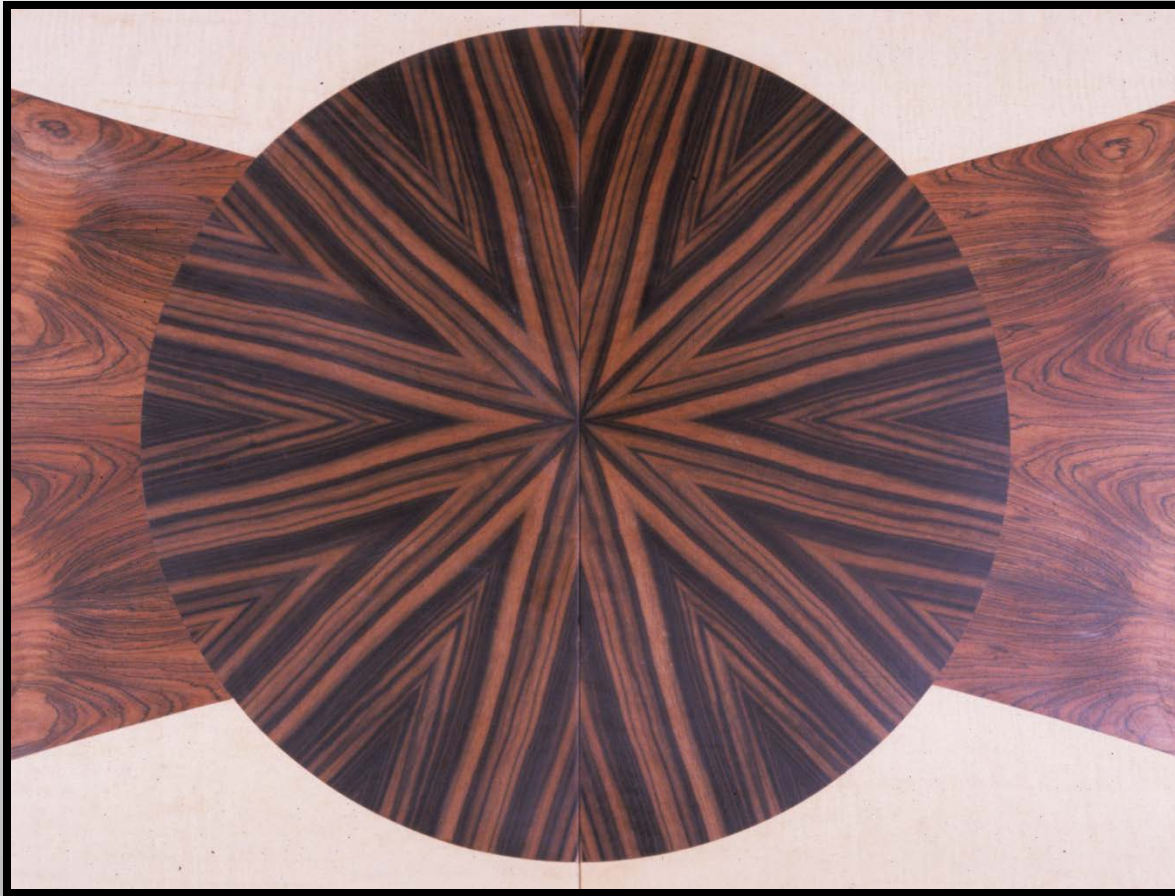


4-Way Diamond Match



Walnut Burl

12- Way Radial Match

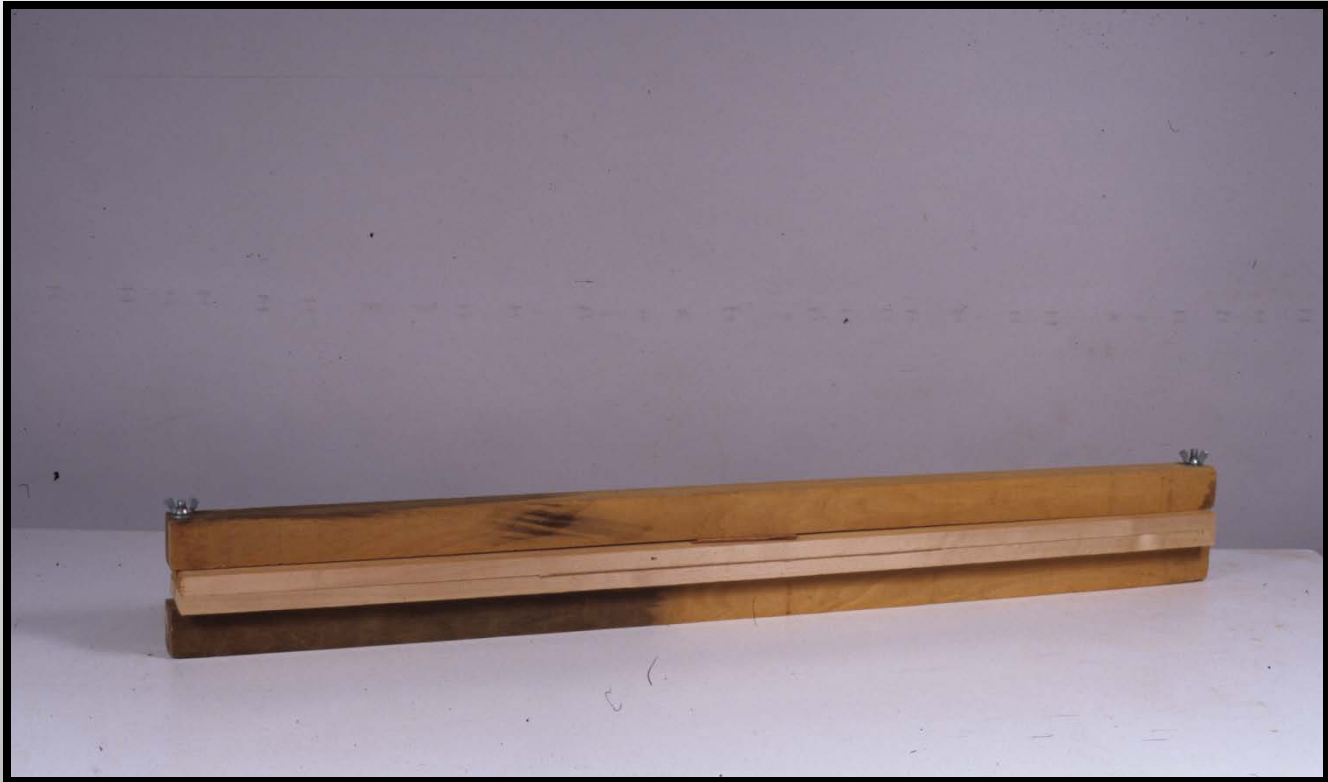


WORKING WITH VENEER

Rough Cutting Veneer



Veneer Shooter



Loading the Shooter



Shooting the Veneer with a Hand Plane



Shooting the Veneer Using a Jointer



Shooting the Veneer Using a Sanding Stick

Taping the Joint



Types of Veneer Tape

Basic Book Match

- ▣ Process slides
- ▣ More inlay slides

Cutting the Veneer for the Inlaid Top



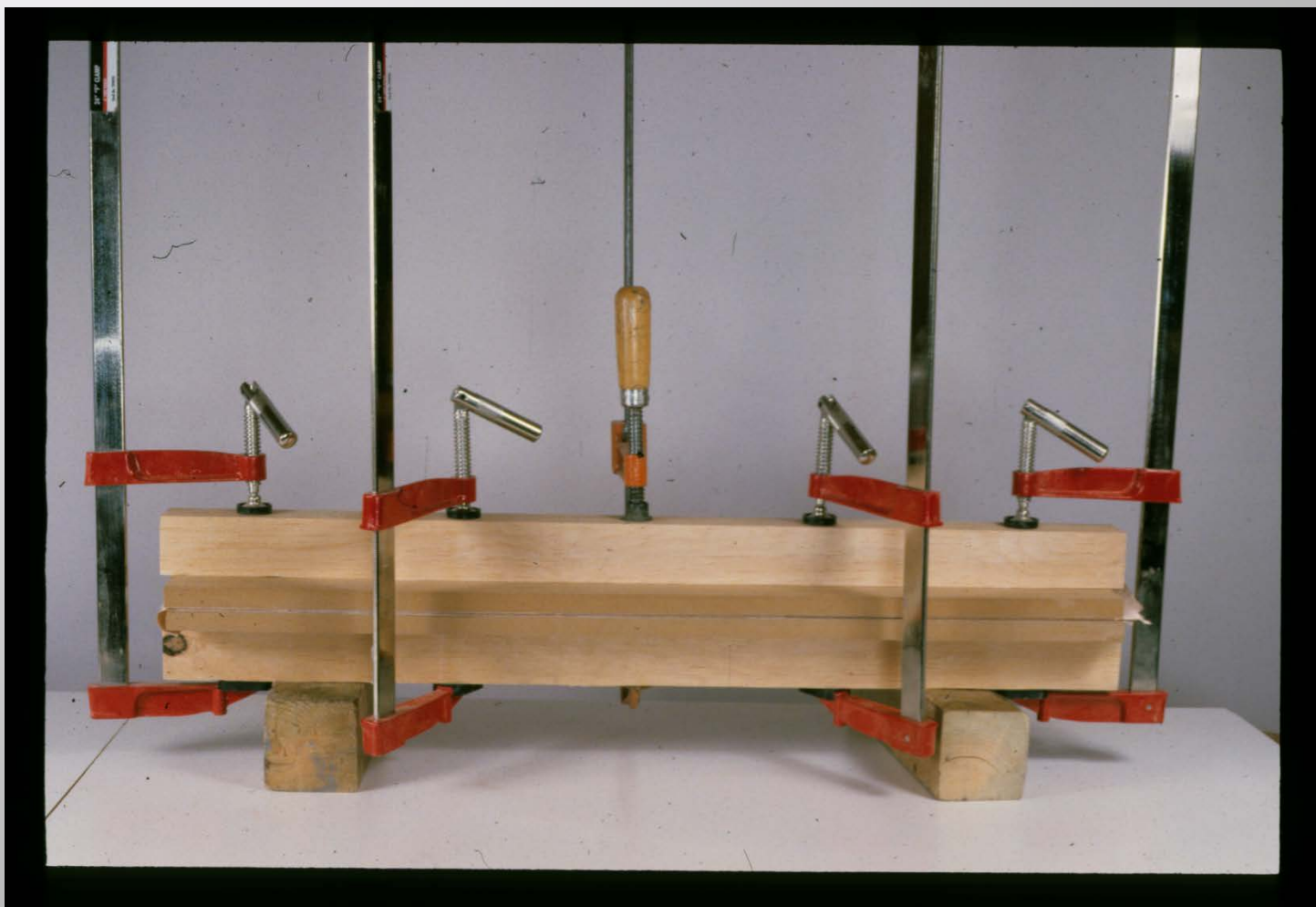
Adhesives



Plywood Substrates



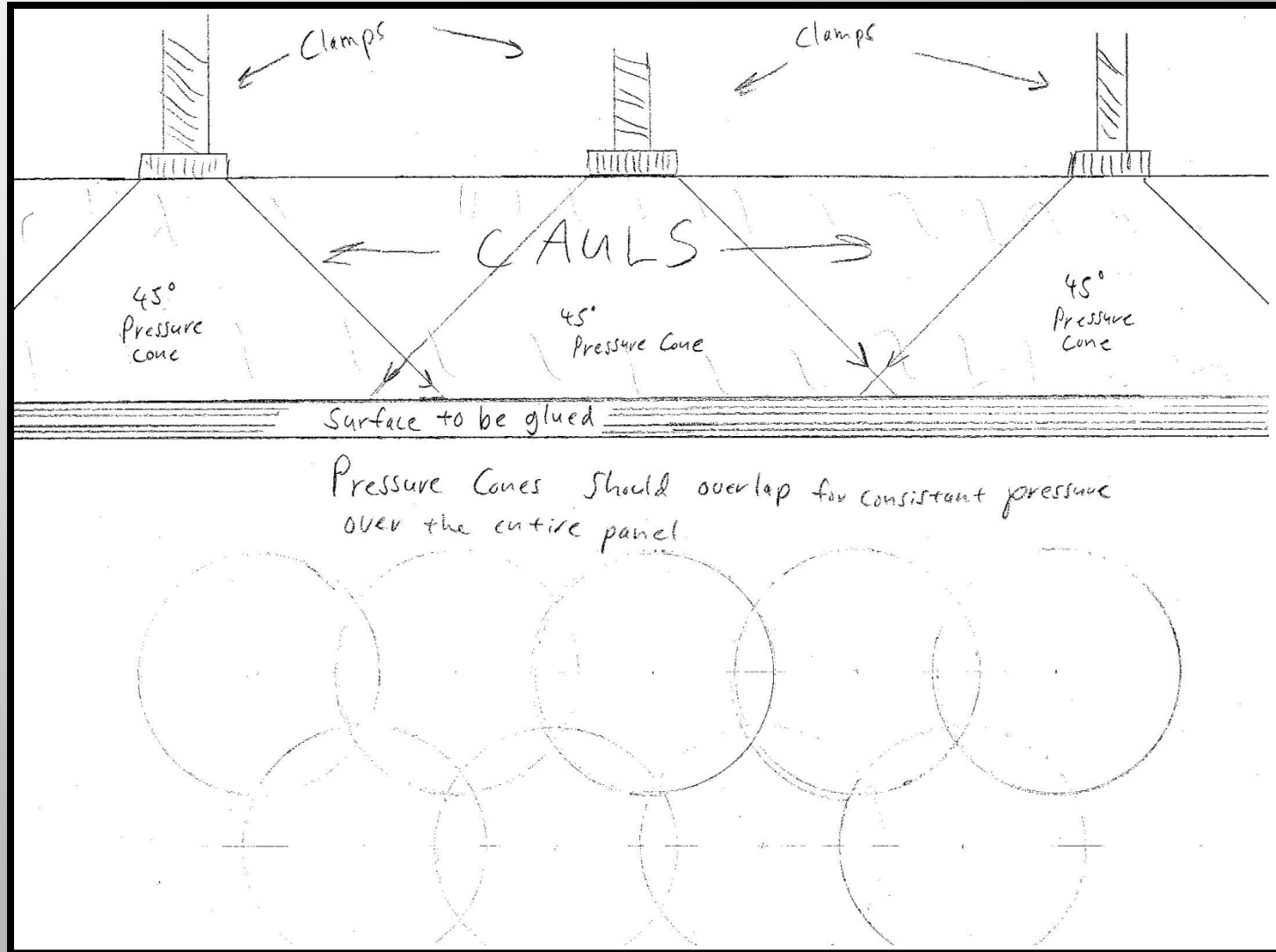
Pressing With Clamps



Screw-Type Veneer Press



Clamping Pressure



Using a Vacuum Bag



Extracting Air form a Vacuum Bag



Vacuum Pressed Panel



4-Way Diamond Match



Walnut Burl

Flexible Substrate



Bending Using a Veneer Press



Making a Curve in a Vacuum Press



Bending the Wood for the Center of the Table in a Vacuum Bag



Constructivist Hall Table



Constrictivist Coffee Table Walnut, Cherry and Granite



Veneering the Edge With a Veneer Hammer



Veneering the Edge With a Veneer Hammer



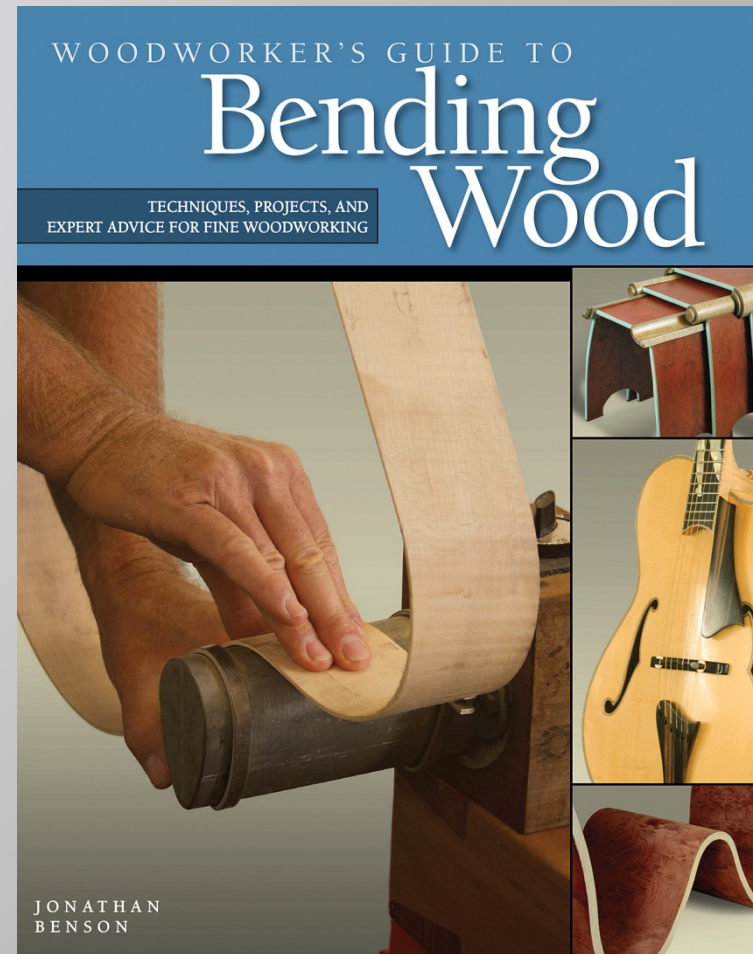
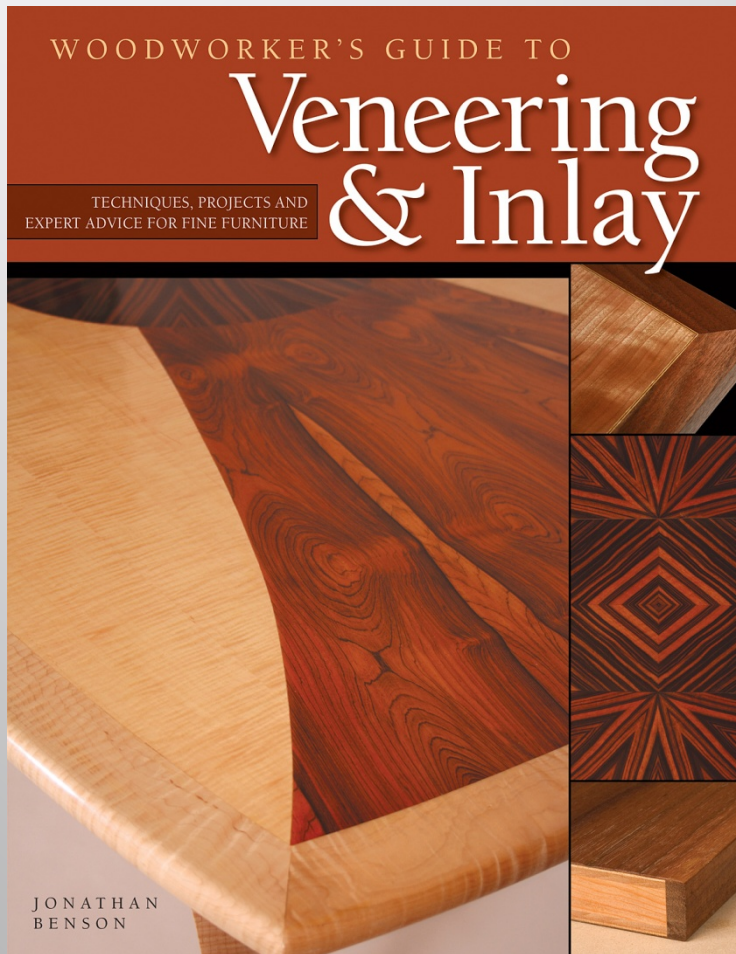
Quilted Maple and Bubinga Pedestal



Bubinga and Maple Burl Pedestal



All Material From:

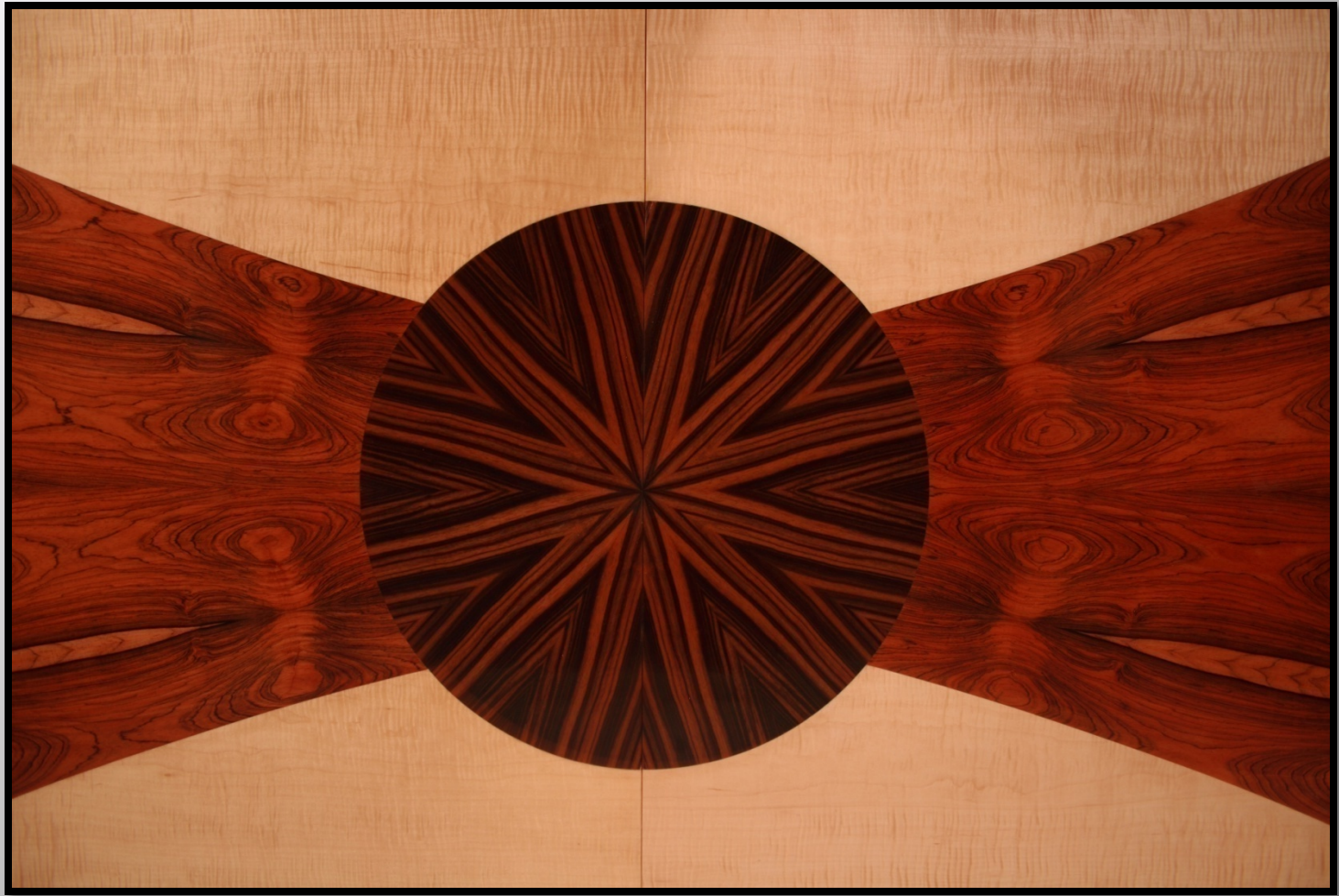


Dining Table
Rosewood, Ebony and Curly Maple









Dining Table Leaf



Desert Sun Sideboard



Desert Sun Details



- ▣ Vintage Brazilian Rosewood
- ▣ Macassar Ebony
- ▣ Curly Maple

Dining Table Swiss Pearwood and Holly



W Table



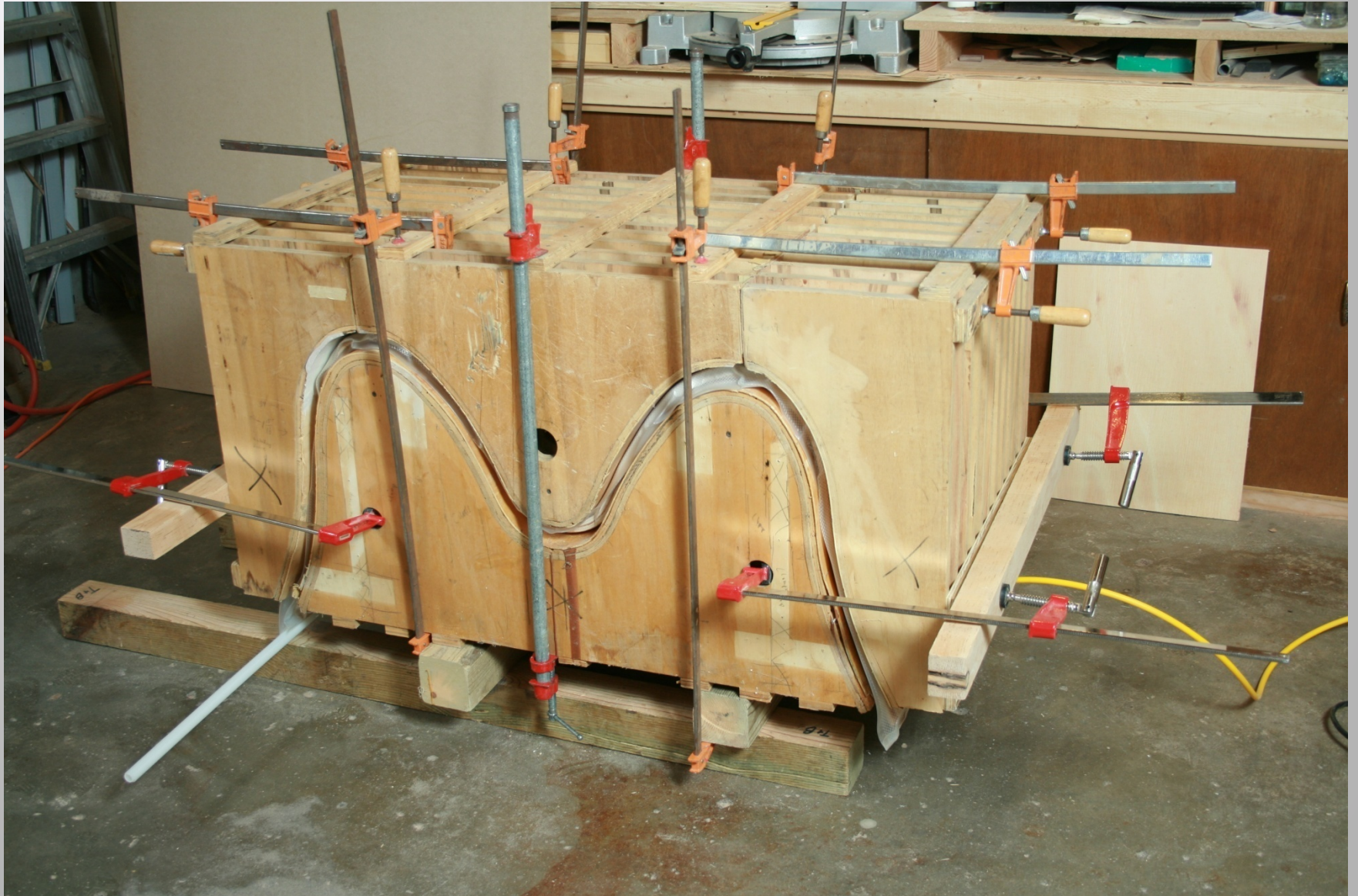
Pressing the Veneer Flat



Placing the Layers Into the Form



The Table Base is Clamped in the Form



The Glue Has Set



Mirror Holding Jig



Completed Table Base



W Table



Satinwood and Purpleheart Coffee Table



Stack Tables

Purpleheart and Stained Dyed Curly Maple



Quilted Maple and Bubinga Pedestal



Gluing Down the Veneer for a Pedestal



Pressing the Pedestal Side in a Veneer Press



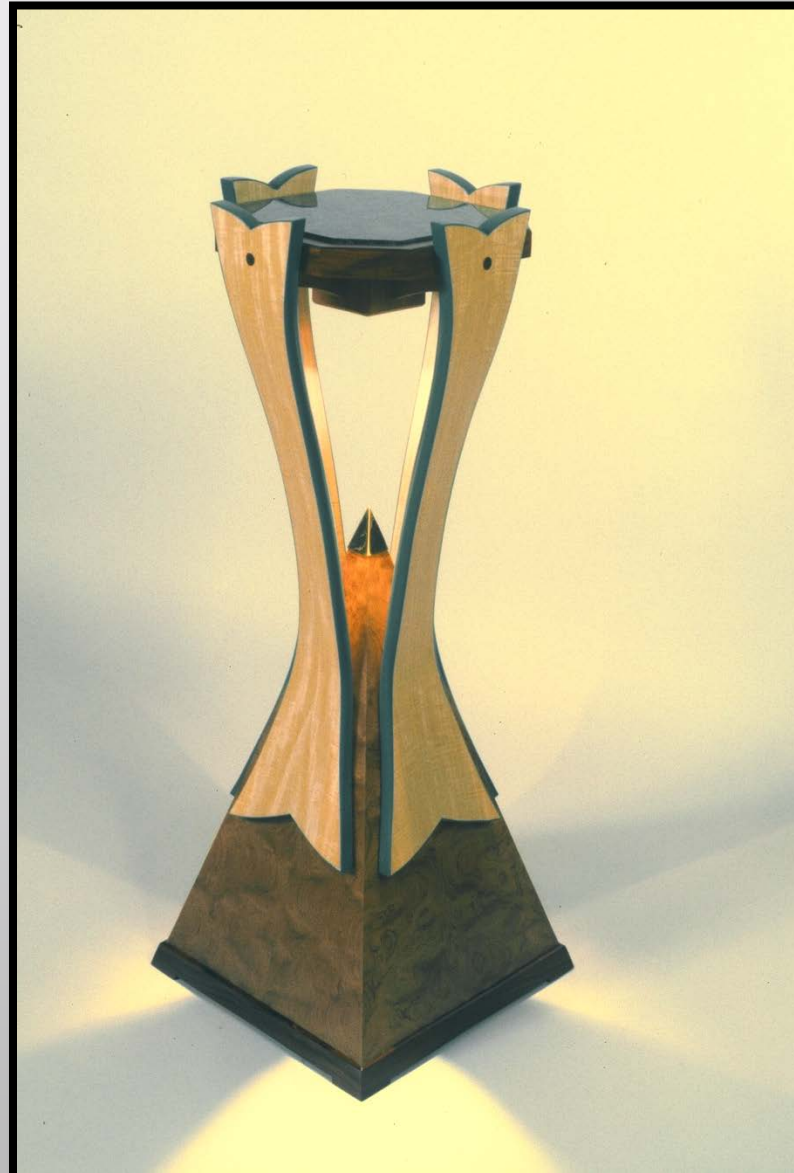
Veneering the Edge With a Veneer Hammer



Bubinga and Maple Burl Pedestal



Pyramid Pedestal Bubinga, Maple Burl and African Satinwood



Gold Plated Capstone Detail



Spiral Table Makore[®] and Curly Maple



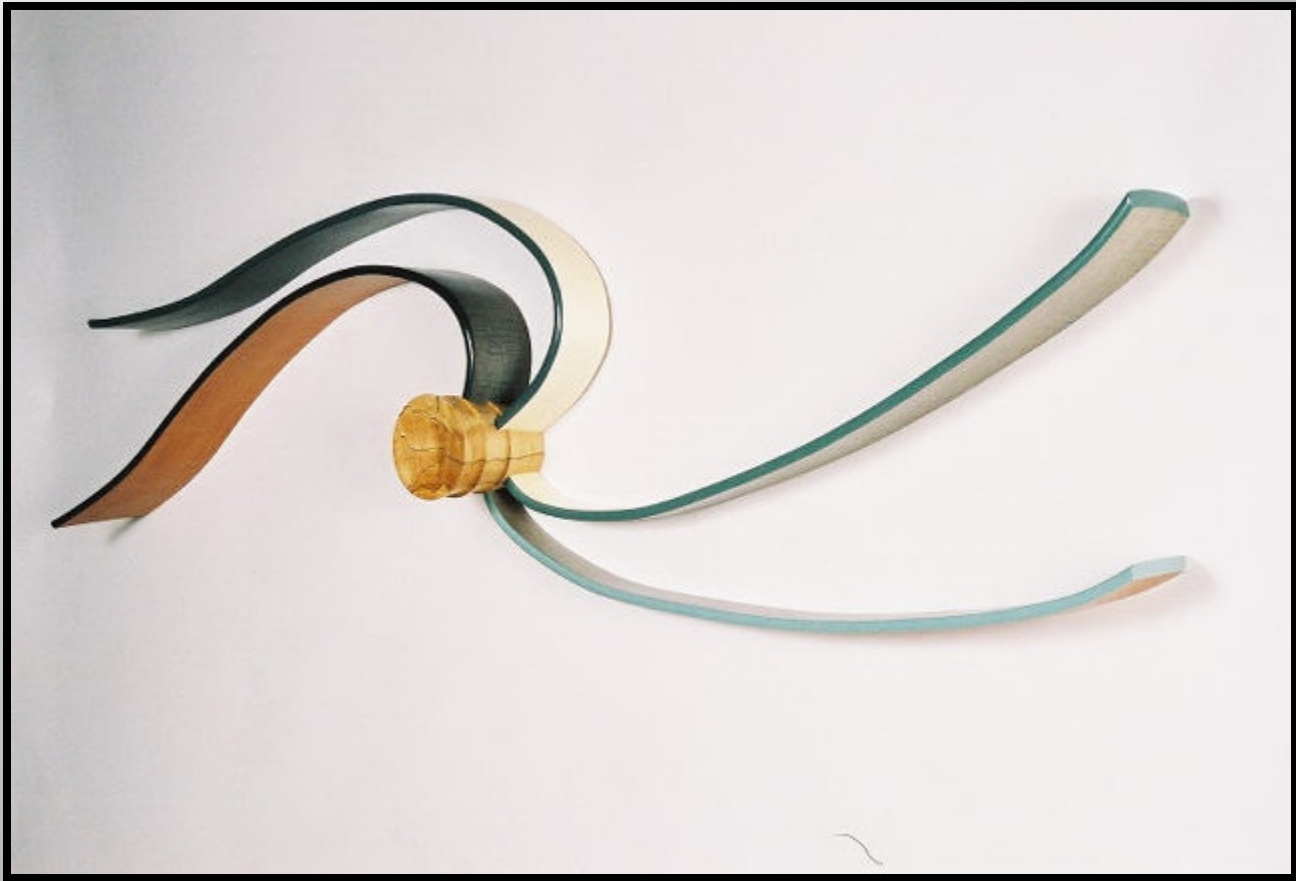
The Spiral Table is Formed in a Vacuum Press



The Curved Leg is Ready for Assembly



Twister



Inside Technique



Band Sawing Veneer



Jointing One Face



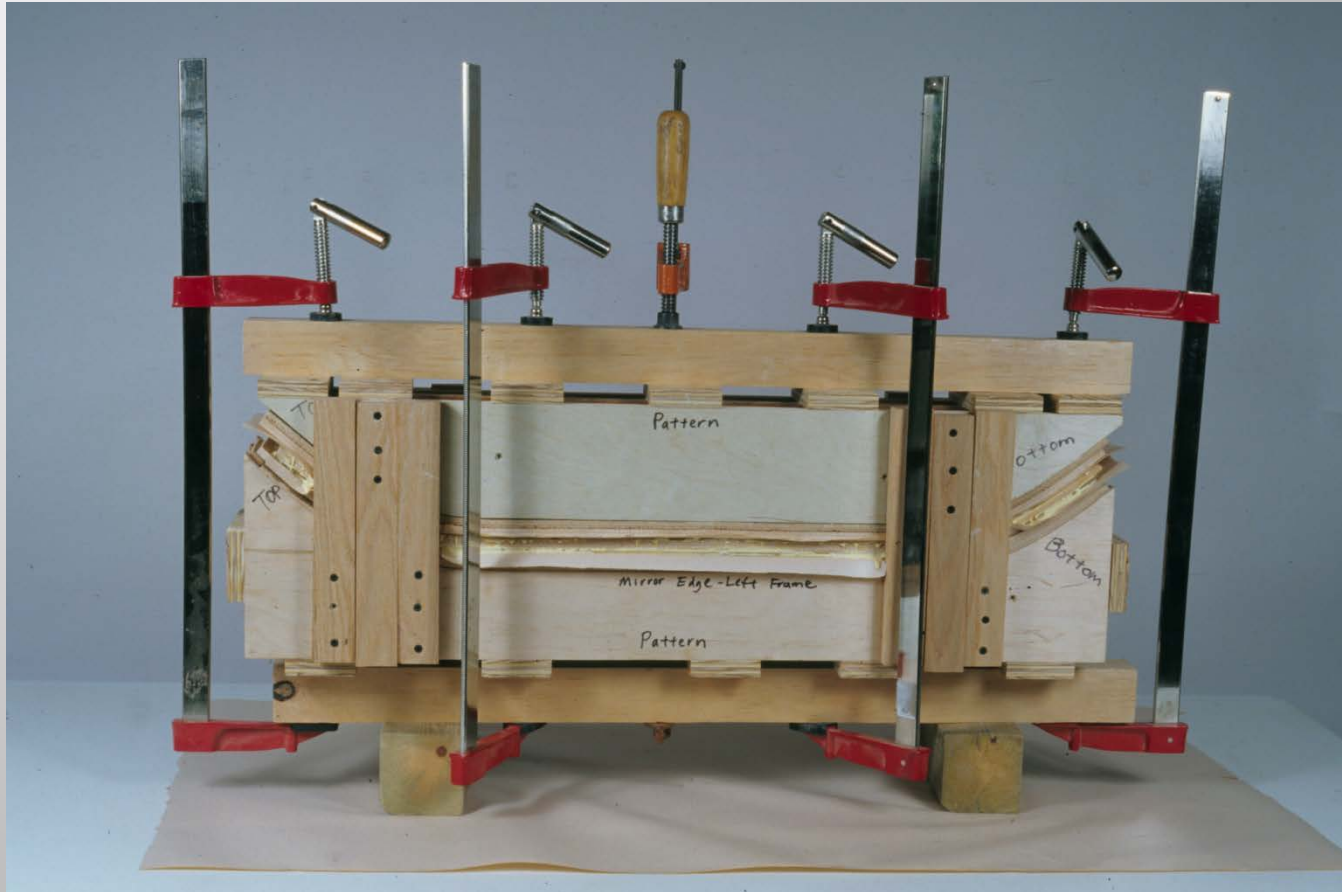
Planing the Veneer



Force of Nature



Two-part Form with Clamps



Vintage Rosewood Mirror





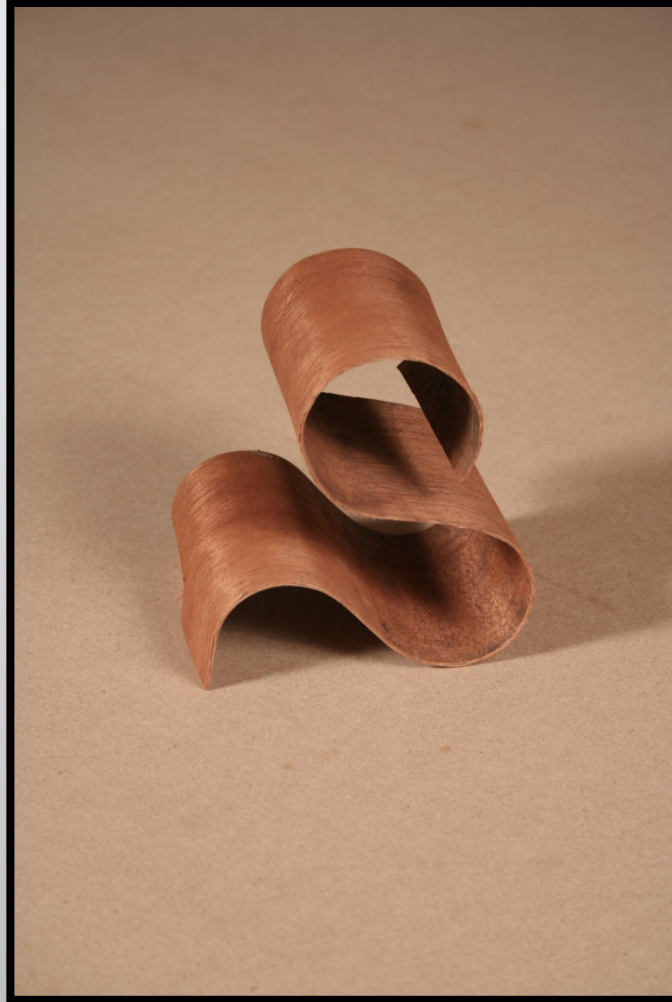
Bench and Mirror / Coatrack Makore[®] and Curly Maple



Bending Thin Wood with a Bending Iron



Extreme Bending



Curved Front Jewelry Cabinet



Rustic Chair



Shaker Box



All Material From:

